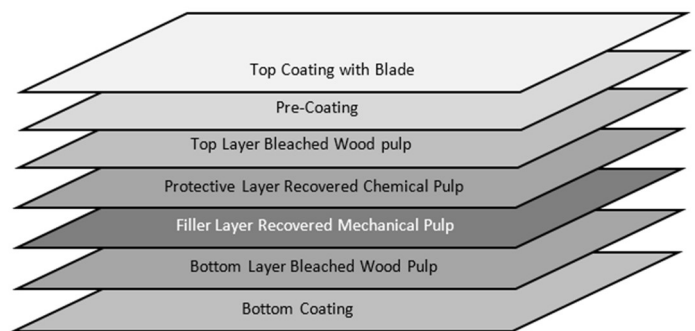


PRODUCT SPECIFICATIONS: GENUS WHITE BACK

| GSM | Caliper (micron) | Bulk (cc/gm) | Stiffness (gm.cm) | | |
|-------------------|-------------------|--------------|-------------------|-----|-----|
| | | | MD | CD | GM |
| Tappi T410 | Tappi T411 | - | Tappi T489 | | |
| 250 | 280 | 1.12 | 65 | 28 | 43 |
| 285 | 328 | 1.15 | 100 | 40 | 63 |
| 300 | 345 | 1.15 | 105 | 45 | 69 |
| 320 | 384 | 1.20 | 135 | 58 | 88 |
| 350 | 420 | 1.20 | 160 | 70 | 106 |
| 400 | 588 | 1.22 | 225 | 105 | 154 |
| 450 | 563 | 1.25 | 320 | 140 | 212 |
| Tolerance | | | | | |
| ±3% | ±5% | | ±15% | | |

| Properties | Units | Value |
|----------------------------|------------------|---------------------|
| Cobb T/B | g/m ² | <45/50 |
| Roughness Bendtsen Type | Ml/min | <320 gsm 60-70 |
| | | >320 gsm 60-85 |
| IGT - Dry Pick | m/sec | >1 |
| Plybond | J/m ² | >120 |
| Gloss at 75° | % | 45±5 |
| Brightness | % | 78±1 |
| Moisture | % | <320 gsm 6 -7 |
| | | >320 gsm 6.5-7.5 |

| Testing conditions: |
|-------------------------------|
| As per TAPPI 402/ISO standard |
| Testing Temperature: 23±1 °C |
| Relative Humidity: 50±2% |



| Packing Information | | |
|--|---|--|
| Deckle (cm) Min: 324 Max:335 Reels Width : 560 - 1800 mm Core Inner Dia: 76mm/3" & 152mm/6" | Sheets Min Size: 500 x 560 mm Max Size: 1500 x 1600 mm | Pallets Min Height: Depend upon order qty Max Height: 1200 mm |